

# PRODUCT SPECIFICATION INFORMATION

PROJECT NAME

**Urinal**

PROJECT LOCATION

DATE

**2022/12/15**

PREPARED BY



**Head Office**

To be specified

### Sloan - Flush Valve



☒ **SL-ROYAL 186-0.5 RW ROYAL®** Manual Exposed Urinal flushometer, 19 mm (3/4") spud coupling For top spud urinal, constructed from Semi-red brass, Polished chrome finish, High Efficiency 1.9 LPF (0.5 GPF), Chloramine resistant PERMEX® synthetic rubber diaphragm, Metal oscillating handle with triple seal handle packing, Flush tube for 292 mm (11-1/2") rough-in, 19 mm (3/4") I.P.S. screwdriver Bak-Chek® angle control stop with free spinning vandal-resistant stop cap, Dual-filtered fixed bypass, High back pressure vacuum breaker, 19 mm (3/4") supply pipe, Features purple wall flange, diaphragm guide, bonnet and inner cover to communicate reclaimed water use, Non-hold-open, no external volume adjustment, fixed volume accuracy is controlled by CID™ technology, Includes adhesive backed metal wall plate with non-potable water warning, Pressure Range: 103 - 552 kPa (15 - 80 PSI) operating water pressure Complies:

### Jay R. Smith - Carrier



☒ **0636** Single, Mounted on concrete floor, Heavy duty one piece construction steel pipe legs welded to block base feet support

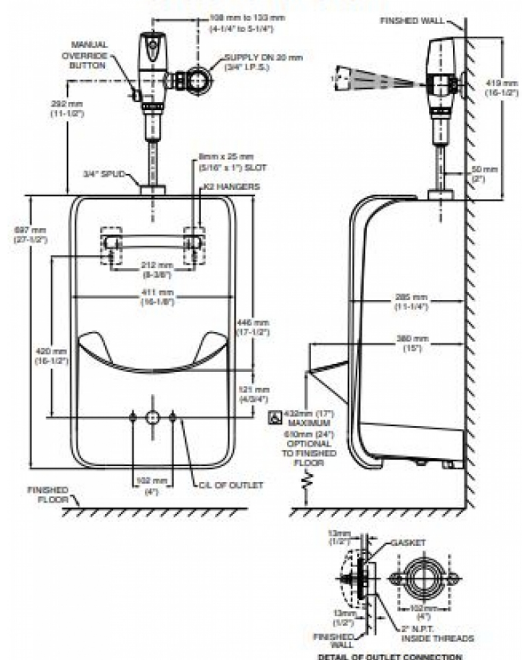
American Standard- Urinal

☒ **6516001EC.020**



GREENBROOK, Wall Mounted, Highly aesthetic vitreous china urinal with large footprint, For Flush Valve, White finish, 0.47 - 1.9 LPF (0.125 - 0.5 GPF), High Efficiency Urinal (HEU) operates in the range of 0.47 - 1.9 LPF (0.125 - 0.50 GPF), Urinal has optimized surface contours and water flushing spreader that rinses inverted back wall for superior splash protection, Washout, 3/4" (19 mm), 51 mm (2") , Top spud, 15" (380 mm) depth, 27-1/2" (698 mm), 16-1/8" (411 mm), Between 20 PSI at valve when flushing and 80 PSI static

### 6516001EC TOP SPUD



Note:

**Spec Reference:** 128675  
**Product Reference:** 30556; 17171463; 7038491

**Estimated Total:** Not available

To be specified

### Sloan - Flush Valve



☒ **SL-ROYAL 186-0.5-ESS-OR** ROYAL® Automatic no-touch Exposed Urinal flushometer, 19 mm (3/4") spud coupling For top spud urinal, Hardwired, constructed from Semi-red brass, Polished chrome finish, High Efficiency 1.9 LPF (0.5 GPF), Chloramine resistant PERMEX® synthetic rubber diaphragm, OPTIMA® EL-1500 self-adaptive infrared sensor, Sensor located on fixed wall sensor plate, Courtesy Flush® electrical override button, Flush tube for 292 mm (11-1/2") rough-in, Adjustable tailpiece, 19 mm (3/4") I.P.S. screwdriver Bak-Chek® angle control stop with free spinning vandal-resistant stop cap, Dual-filtered fixed bypass, Sweat solder adapter kit with cover tube, High back pressure vacuum breaker, Inlet located right of valve (standard), 19 mm (3/4") supply pipe, Cast wall flange with set screw, Non-hold-open, no external volume adjustment, fixed volume accuracy is controlled by CID™ technology, 24 VAC input/output, With indicator light, Requires transformers 0345154 or 0345999, Pressure Range: 103 - 552 kPa (15 - 80 PSI) operating water pressure Compliances: cUPC compliant.

### Sloan - Faucet and Flush Valve Power Kit



☒ **SL-EL-154** For flush valve

### Jay R. Smith - Carrier



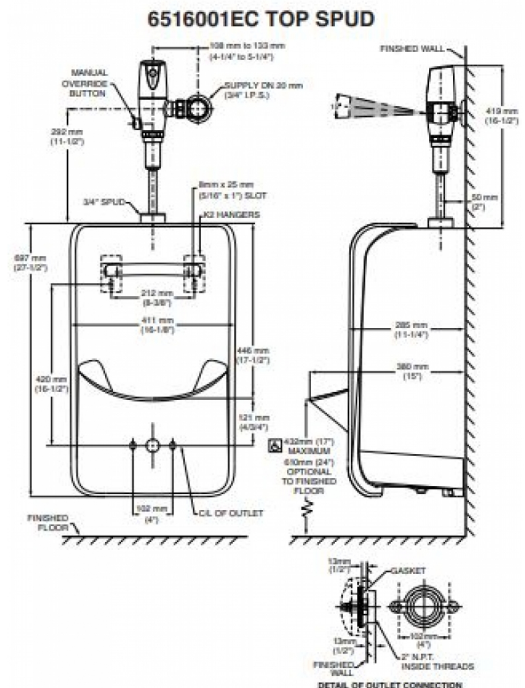
☒ **0636** Single, Mounted on concrete floor, Heavy duty one piece construction steel pipe legs welded to block base feet support

American Standard- Urinal

☒ **6516001EC.020**



GREENBROOK, Wall Mounted, Highly aesthetic vitreous china urinal with large footprint, For Flush Valve, White finish, 0.47 - 1.9 LPF (0.125 - 0.5 GPF) , High Efficiency Urinal (HEU) operates in the range of 0.47 - 1.9 LPF (0.125 - 0.50 GPF) , Urinal has optimized surface contours and water flushing spreader that rinses inverted back wall for superior splash protection, Washout, 3/4" (19 mm), 51 mm (2") , Top spud, 15" (380 mm) depth, 27-1/2" (698 mm), 16-1/8" (411 mm), Between 20 PSI at valve when flushing and 80 PSI static



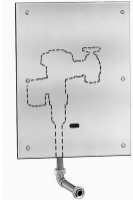
Note:

**Spec Reference:** 128675  
**Product Reference:** 30556; 7309687; 7030565;  
7038491

Estimated Total: **Not available**

To be specified

Sloan - Flush Valve



☒ **SL-ROYAL195-0.5-WB-ESS** ROYAL® Automatic no-touch Concealed Urinal flushometer, 19 mm (3/4") spud coupling For back spud urinal, Hardwired, constructed from Semi-red brass, Rough brass finish, High Efficiency 1.9 LPF (0.5 GPF), Chloramine resistant PERMEX® synthetic rubber diaphragm, OPTIMA® EL-1500 self-adaptive infrared sensor, Sensor located on wall box cover plate, 330 x 432 mm (13" x 17") EASY ACCESS® wall box with stainless steel front access panel and vandal-resistant screws, No override button, Flush tube for 343 mm (13-1/2") rough-in, Adjustable tailpiece, "L" dimension to be specified for the flush connection length (wall thickness (to nearest whole inch) plus 70 mm (2-3/4"), 19 mm (3/4") I.P.S. wheel handle Bak-Chek® angle control stop, High back pressure vacuum breaker, 19 mm (3/4") supply pipe, Non-hold-open, no external volume adjustment, fixed volume accuracy is controlled by CID™ technology, 24 VAC input/output, With indicator light, Requires transformers 0345154 or 0345999, Pressure Range: 103 - 552 kPa (15 - 80 PSI) operating water pressure  
 Compliances: Requires less than 5 pounds of force to activate (push button).

Sloan - Faucet and Flush Valve Power Kit



☒ **SL-EL-154** For flush valve

Jay R. Smith - Carrier



☒ **0636** Single, Mounted on concrete floor, Heavy duty one piece construction steel pipe legs welded to block base feet support

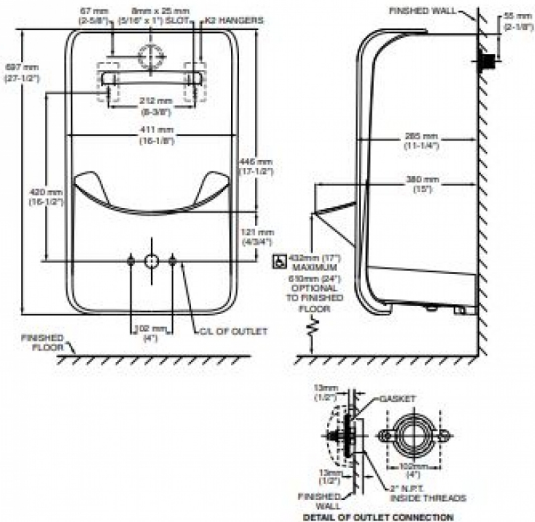
American Standard- Urinal

☒ **6517001EC.020**



GREENBROOK, Wall Mounted, Highly aesthetic vitreous china urinal with large footprint, For Flush Valve, White finish, 0.47 - 1.9 LPF (0.125 - 0.5 GPF) , High Efficiency Urinal (HEU) operates in the range of 0.47 - 1.9 LPF (0.125 - 0.50 GPF) , Urinal has optimized surface contours and water flushing spreader that rinses inverted back wall for superior splash protection, Washout, 3/4" (19 mm), 51 mm (2" ) , Back spud, 15" (380 mm) depth, 27-1/2" (698 mm), 16-1/8" (411 mm), Between 20 PSI at valve when flushing and 80 PSI static

6517001EC BACK SPUD



Note:

**Spec Reference:** 128675  
**Product Reference:** 30555; 7317910; 7030565; 7038491

Estimated Total: **Not available**

*American  
Standard*

U-4

***Flowise Flush-Free Waterless Urinal - Medium***

Urinal

To be specified

## Jay R. Smith - Carrier



☒ **0636** Single, Mounted on concrete floor, Heavy duty one piece construction steel pipe legs welded to block base feet support

☒ **0636** Single, Mounted on concrete floor, Heavy duty one piece construction steel pipe legs welded to block base feet support

American Standard- Urinal

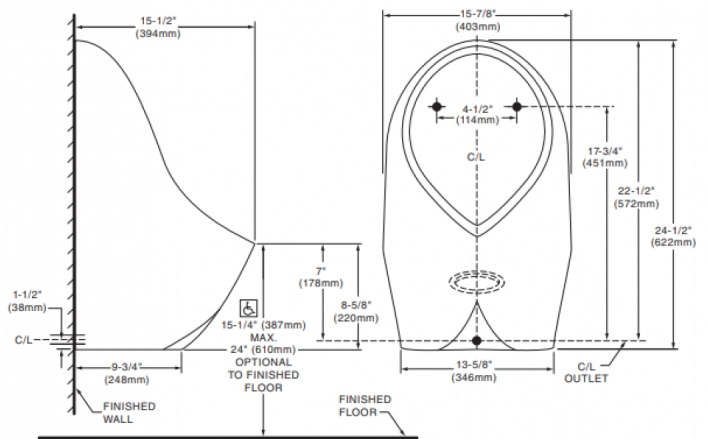
☒ **6154100.020**

  
6154.100 

☒ 6154100.020



FLOWISE™. Wall Mounted, Vitreous china no water wall hung urinal with integral housing and drain insert, WATERLESS URINAL, White finish, No water, FLUSH-FREE, 38 mm (1-1/2"), FLUSH-FREE WATERLESS URINAL, None, Medium - 15-7/8" x 24-1/2" x 15-1/2" (403 x 622 x 394 mm)



Note:

**Spec Reference:** 128675  
**Product Reference:** 7049920; 7038491

Estimated Total: **Not available**

To be specified

### Sloan - Flush Valve



☒ **SL-ROYAL 186-0.5** ROYAL® Manual Exposed Urinal flushometer, 19 mm (3/4") spud coupling For top spud urinal, constructed from Semi-red brass, Polished chrome finish, High Efficiency 1.9 LPF (0.5 GPF), Chloramine resistant PERMEX® synthetic rubber diaphragm, Metal oscillating handle with triple seal handle packing, Flush tube for 292 mm (11-1/2") rough-in, Adjustable tailpiece, 19 mm (3/4") I.P.S. screwdriver Bak-Chek® angle control stop with free spinning vandal-resistant stop cap, Dual-filtered fixed bypass, Sweat solder adapter kit with cover tube, High back pressure vacuum breaker, Inlet located right of valve, 19 mm (3/4") supply pipe, Cast wall flange with set screw, Non-hold-open, no external volume adjustment, fixed volume accuracy is controlled by CID™ technology, Pressure Range: 103 - 552 kPa (15 - 80 PSI) operating water pressure  
Compliances: Requires less than 5 pounds of force to activate (push button), cUPC compliant.

### Jay R. Smith - Carrier



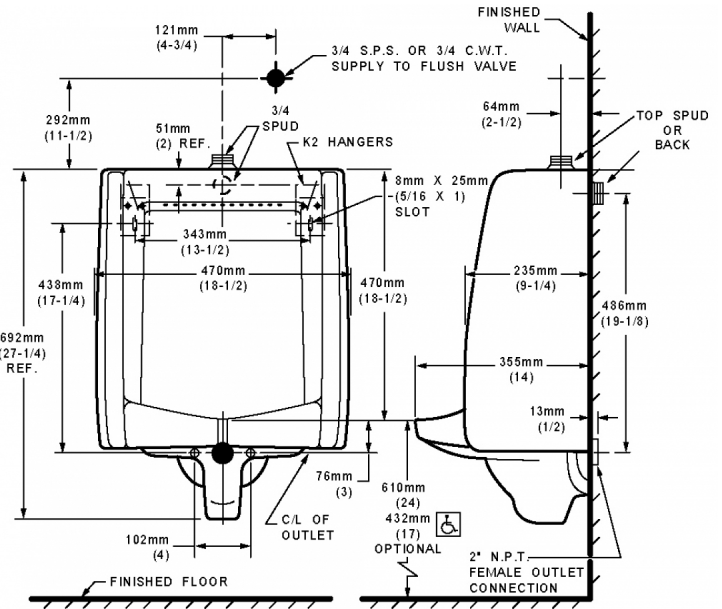
☒ **0636** Single, Mounted on concrete floor, Heavy duty one piece construction steel pipe legs welded to block base feet support

American Standard- Urinal

☒ **6590001.020-7301242-100-0020A**



WASHBROOK FLOWISE, Wall-hung, Vitreous china, Flush valve, White, Ultra high efficiency. Operates in the range of 0.5 to 3.8 LPF (0.1 to 1.0 GPF ; Washout, 19 mm (3/4") ; Outlet connection threaded 51 mm (2") inside (NPTF) ; 51 mm (2") ; Top spud, 14-1/8" (359 mm) ; 664 mm (26-1/8") high, 479 mm (18-7/8") wide, 20 PSI (flowing) - 80 PSI (static), Can be installed left or right handed



Note:

**Spec Reference:** 128675  
**Product Reference:** 7324935; 7309581;  
7038491

Estimated Total: **Not available**



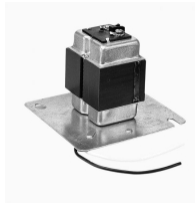
To be specified

## Sloan - Flush Valve



☒ **SL-ROYAL 186-0.5-ESS** ROYAL® Automatic no-touch Exposed Urinal flushometer, 19 mm (3/4") spud coupling For top spud urinal, Hardwired, constructed from Semi-red brass, Polished chrome finish, High Efficiency 1.9 LPF (0.5 GPF), Chloramine resistant PERMEX® synthetic rubber diaphragm, OPTIMA® EL-1500 self-adaptive infrared sensor, Sensor located on fixed wall sensor plate, No override button, Flush tube for 292 mm (11-1/2") rough-in, Adjustable tailpiece, 19 mm (3/4") I.P.S. screwdriver Bak-Chek® angle control stop with free spinning vandal-resistant stop cap, Dual-filtered fixed bypass, Sweat solder adapter kit with cover tube, High back pressure vacuum breaker, Inlet located right of valve (standard), 19 mm (3/4") supply pipe, Cast wall flange with set screw, Non-hold-open, no external volume adjustment, fixed volume accuracy is controlled by CID™ technology, 24 VAC input/output, With indicator light, Requires transformers 0345154 or 0345999, Pressure Range: 103 - 552 kPa (15 - 80 PSI) operating water pressure Complies: cUPC compliant.

## Sloan - Faucet and Flush Valve Power Kit



☒ **SL-EL-154** For flush valve

## Jay R. Smith - Carrier



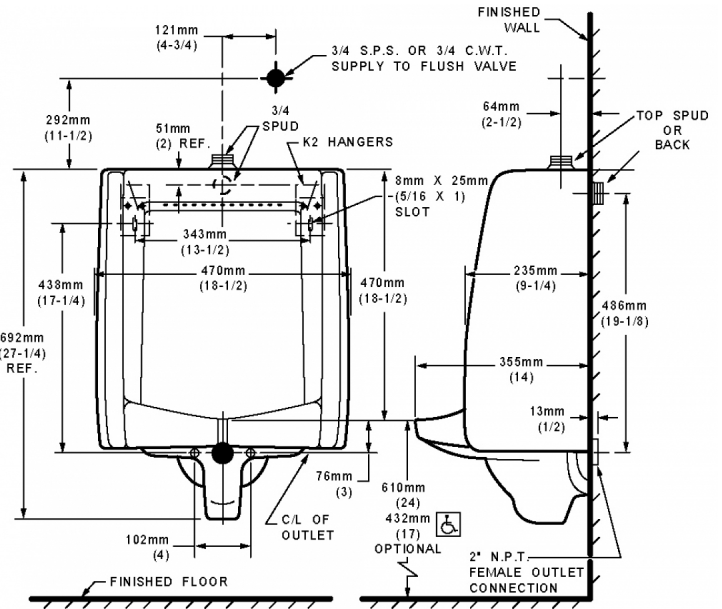
☒ **0636** Single, Mounted on concrete floor, Heavy duty one piece construction steel pipe legs welded to block base feet support

American Standard- Urinal

☒ **6590001.020-7301242-100-0020A**



WASHBROOK FLOWISE, Wall-hung, Vitreous china, Flush valve, White, Ultra high efficiency. Operates in the range of 0.5 to 3.8 LPF (0.1 to 1.0 GPF) ; Washout, 19 mm (3/4") ; Outlet connection threaded 51 mm (2") inside (NPTF) ; 51 mm (2") ; Top spud, 14-1/8" (359 mm) ; 664 mm (26-1/8") high, 479 mm (18-7/8") wide, 20 PSI (flowing) - 80 PSI (static), Can be installed left or right handed



Note:

**Spec Reference:** 128675  
**Product Reference:** 7324935; 7309686;  
7030565; 7038491

Estimated Total: **Not available**



U-7

Urinal

## Washbrook FloWise Universal Urinal

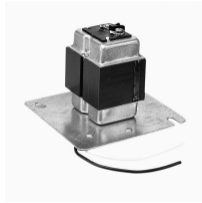
To be specified

### Sloan - Flush Valve



☒ **ROYAL 195 ESS-0.5-OR-W/BOX-HW** ROYAL® Automatic no-touch Concealed Urinal flushometer, 19 mm (3/4") spud coupling For back spud urinal, Hardwired, constructed from Semi-red brass, Rough brass finish, High Efficiency 1.9 LPF (0.5 GPF), Chloramine resistant PERMEX® synthetic rubber diaphragm, OPTIMA® EL-1500 self-adaptive infrared sensor, Sensor located on wall box cover plate, 330 x 432 mm (13" x 17") EASY ACCESS® wall box with stainless steel front access panel and vandal-resistant screws, Courtesy Flush® electrical override button, Flush tube for 343 mm (13-1/2") rough-in, Adjustable tailpiece, "L" dimension to be specified for the flush connection length (wall thickness (to nearest whole inch) plus 70 mm (2-3/4"), 19 mm (3/4") I.P.S. wheel handle Bak-Chek® angle control stop, High back pressure vacuum breaker, 19 mm (3/4") supply pipe, Non-hold-open, no external volume adjustment, fixed volume accuracy is controlled by CID™ technology, 24 VAC input/output, With indicator light, Requires transformers 0345154 or 0345999,  
Pressure Range: 103 - 552 kPa (15 - 80 PSI) operating water pressure  
Compliances: Requires less than 5 pounds of force to activate (push button).

### Sloan - Faucet and Flush Valve Power Kit



☒ **SL-EL-154** For flush valve

### Jay R. Smith - Carrier



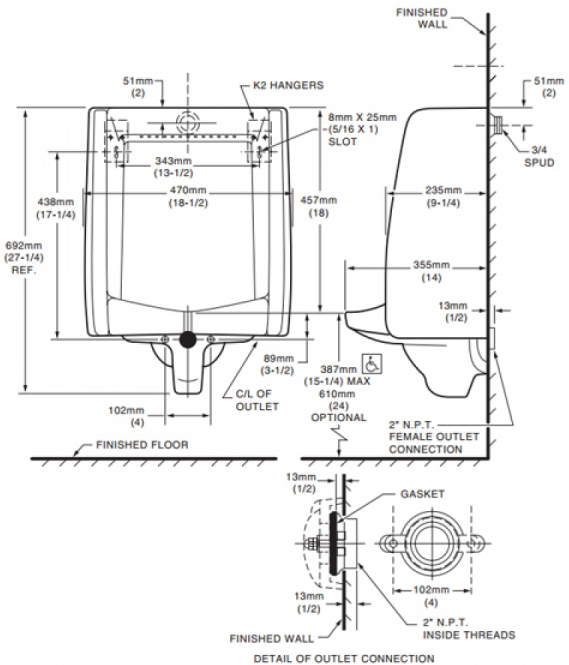
☒ **0636** Single, Mounted on concrete floor, Heavy duty one piece construction steel pipe legs welded to block base feet support

American Standard- Urinal

☒ **6515001.002**



WASHBROOK FLOWISE, Wall-hung, Vitreous china, Flush valve, White finish, Ultra high efficiency. Operates in the range of 0.5 to 3.8 LPF (0.1 to 1.0 GPF, Washout, 19 mm (3/4"), Outlet connection threaded 51 mm (2") inside (NPTF), 51 mm (2"), Back spud, 14-1/8" (359 mm), 664 mm (26-1/8") high, 479 mm (18-7/8") wide, 20 PSI (flowing) - 80 PSI (static), Can be installed left or right handed



Note:

**Spec Reference:** 128675  
**Product Reference:** 9280608; 19118970;  
7030565; 7038491

Estimated Total: **Not available**